

PRESSING/MOLDING

914/914E UNIFORM PRESS



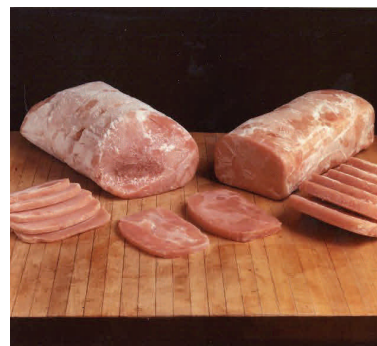
MACHINE FEATURES:

- ◆ Adjustable pressure and dwell controls ensure exact product shape parameters are obtained
- ◆ Unique forming system guarantees accurate and consistent performance, *cycle after cycle!*
- ◆ Molds are easily interchangeable during production...*within minutes!*

FORM TEMPERED AND CRUST FROZEN PRODUCTS WITH THE ROSS 914 UNIFORM PRESS. UNIQUE "DOUBLE-RAM" PRESS ACTION ENSURES PRESSURE IS EVENLY DISTRIBUTED THROUGHOUT THE MOLD CAVITY, SQUARING PRODUCT ENDS, TO CREATE UNIFORMLY SHAPED PRODUCTS.

PROCESSOR BENEFITS:

- ◆ Uniformly shaped products maximize slice yields, improves plant productivity, and increases bottom line profits.



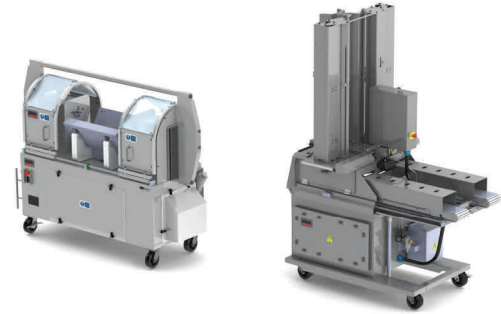
PRESSING/MOLDING

914/914E UNIFORM PRESS



KEY FEATURES:

- ◆ Molds are custom-built to your specification, or choose from hundreds already designed!
- ◆ Creates end-to-end, consistent cross-sectional area which when sliced to thickness yields equal weight portions
- ◆ Thinly slice tempered beef, press back together and slice again to make equal weight portions for Break-Away Steak...



Couple the **Ross 914 Press** with the **Ross 975 Slicer** (matching chutes and molds) to create quality portions consistently and *profitably!*



SPECIFICATIONS

MODEL	914	914E
Machine Dimensions	87" L x 28" W x 50" H (221cm x 71cm x 127cm)	97" L x 28" W x 50" H (246cm x 71cm x 127cm)
Maximum Mold Cavity Size	22" L x 6.5" W x 9" H (55.8cm x 16.5cm x 22.8cm) Mold size dependent upon width and height of product	32" L x 5" W x 10" H (81.2cm x 12.7cm x 25.4cm) Mold size dependent upon width and height of product
Average Cycle/Minute	6	
Pressure	Adjustable to 1500 psi	
Dwell Range	3-10 Seconds	
Voltage Requirements	200-575V • 50/60 Hz • 30-12A	
Product Temperature	25°F to 29°F (-4°C to -2°C)	
Certification	CE Compliant	